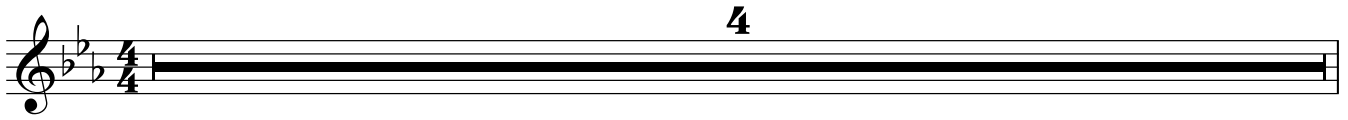


# Pakkanen

säv. Pilvi Järvelä  
san. trad. kalevalamittainen



**SÄKEISTÖT 1-2**

1. Pak - ka - nen pu - hu - rin poi - ka vi - lun poi - ka hyt - ty - räi - nen  
7 2. Is - ke tul - ta suk - ka - ha - ni ke - kä - let - tä ken - kä - hä - ni

ä - lä kyl - mä kyn - si - ä - ni ä - lä pää - tä - ni pa - le le joo  
kyl - mä soi - ta kyl - mä mai - ta kyl - mä kyl - mi - ä ki - vi - ä joo

**KERTOSÄE**

15 Kyl - mä soi - ta kyl - mä mai - ta kyl - mä kyl - mi - ä ki - vi - ä, joo

Kyl - mä soi - ta kyl - mä mai - ta kyl - mä kyl - mi - ä ki - vi - ä, joo

**SÄKEISTÖT 3-4**

21 3. Sil - loin kyl - mit täy - en kyl - män sil - loin pak - ka - sen pa - le lit  
4. Tu - len tun - gen suk - ki - hi - ni ke - kä - le - hen ken - ki - hi - ni

kyl - mit rau - ta - sen ko - ren - non Se - pän Il - ma - rin pa - jas - sa joo  
jot - tei pak - ka - nen pa - le - le vi - lu - il - ma vii - pot - te - le joo

**KERTOSÄE**

29 Kyl - mä soi - ta kyl - mä mai - ta kyl - mä kyl - mi - ä ki - vi - ä, joo

Kyl - mä soi - ta kyl - mä mai - ta kyl - mä kyl - mi - ä ki - vi - ä, joo

PAKKANEN

Alto 1-2

2

BRIDGE Pakkanen! Jousisoittimet huiluääniä, laulu suhisten, pitkä crescendo

Musical score for the Bridge section, measures 41-48. The score is in 3/8 time and B-flat major. It features two staves: a vocal line and a piano accompaniment line. The piano part has a 4-measure rest at the beginning of each system. The vocal line starts with a piano (*pp*) dynamic and includes a long crescendo. The section ends with a 4-measure rest in both staves.

SÄKEISTÖT 1-2

Musical score for the first two phrases of the Chorus, measures 51-58. The score is in 3/8 time and B-flat major. It features a single vocal line. The first phrase (measures 51-54) is marked with a 4-measure rest and a first ending bracket. The second phrase (measures 55-58) is marked with a 2-measure rest and a second ending bracket.

KERTOSÄE 3x

Musical score for the Refrain, measures 61-64. The score is in 3/8 time and B-flat major. It features two staves: a vocal line and a piano accompaniment line. The piano part has a 4-measure rest at the beginning of each system. The vocal line starts with a long note and includes a crescendo. The section ends with a 4-measure rest in both staves.